

Yünlü  
Nəz'el

Nr: 4  
op. 278

HÜSEYİNİ DAZ SEMAİSİ (1)

H. S. AZEL

①

ely. Op. 278



Handwritten musical notation for the first staff of the piece. It begins with a treble clef and a key signature of one sharp (F#). The notation includes eighth and sixteenth notes, rests, and a triplet marking over a group of notes. The staff is written on a five-line system.

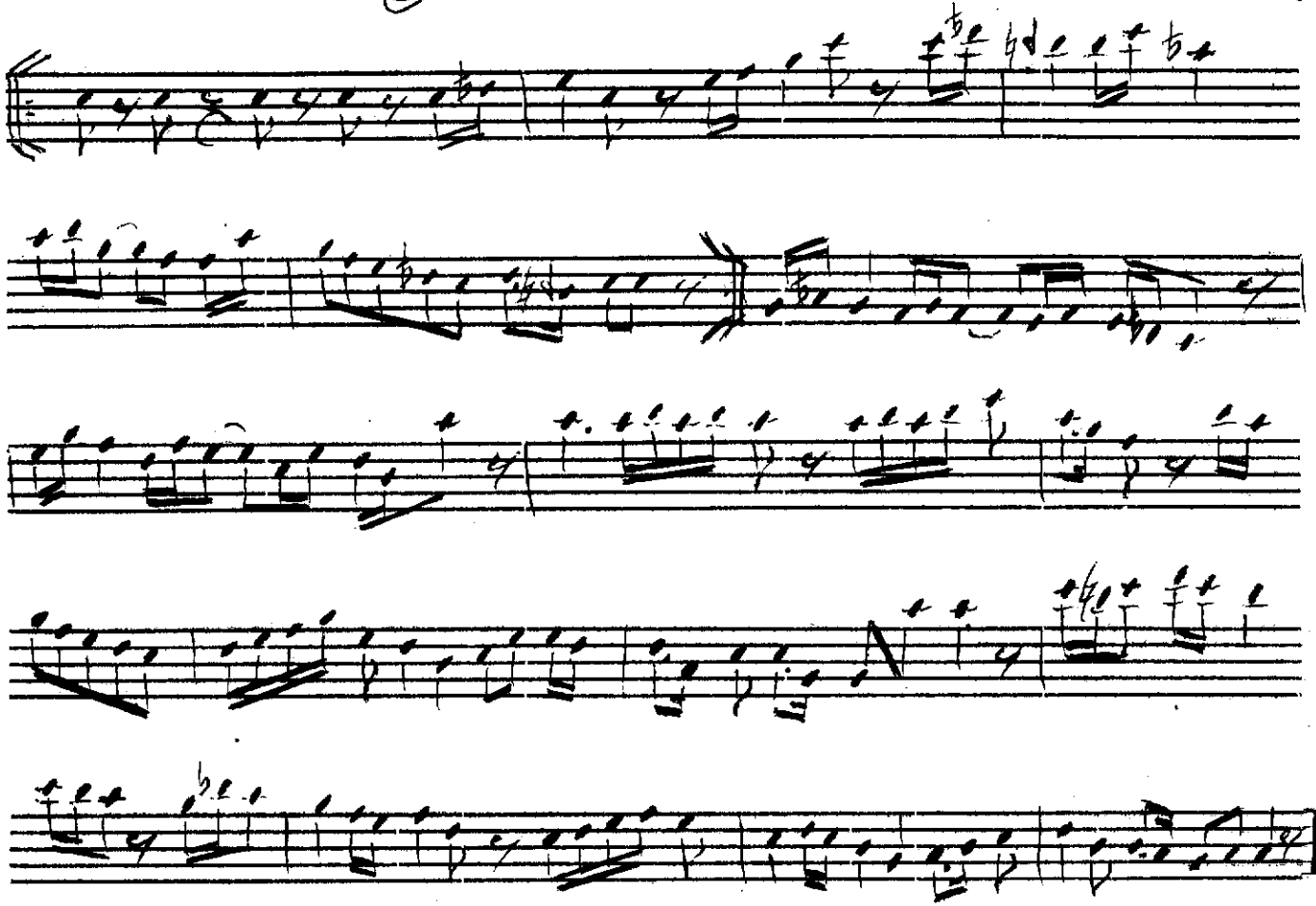
Handwritten musical notation on a single staff. The notation includes various notes, rests, and accidentals. Above the staff, the word "Tun" is written. The staff ends with a double bar line and a key signature change to one flat.

②

Handwritten musical notation on a five-line staff. The notation includes various note values, rests, and accidentals (sharps and flats). The piece concludes with a double bar line and a repeat sign.

A single staff of handwritten musical notation. It begins with a treble clef and a key signature of one flat (B-flat). The notation includes several measures with eighth and sixteenth notes, some beamed together. There are also rests and dynamic markings such as 'p' (piano) and 'f' (forte). The handwriting is fluid and characteristic of a composer's sketch.

② HÜSEYİNİ SAZ SEMAİSİ H.S. AREL



# HÜSEYİNİ SAZ SEMAİSİ (3)

H.S. AREL

Taksim

4.

p

Taksim

5.

CENGİZ HARRİ

5.

40/8

# HÜSEYİN VAZ SEMAİSİ (4)

H.S. AREL

